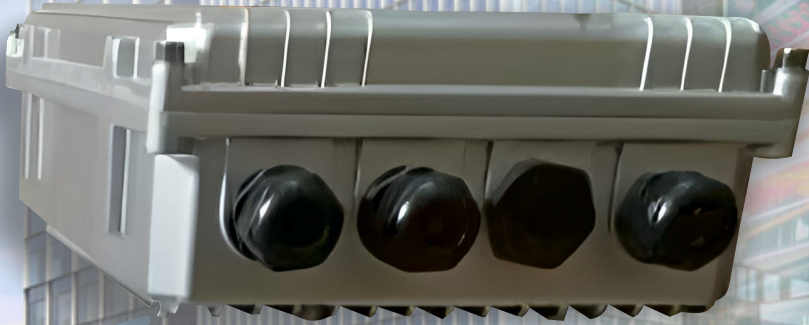


A Critical Tool for Wi-Fi 6 Deployment

# ENOKIT FS8

All-outdoor Wireless with an  
Embedded High-resolution Camera



IP Outdoor Solution  
for **Smart**  
Network

Zero  
Latency

Fiber |  
Ethernet

Dual  
Frequency

Wi-Fi 6  
(802.11ax)

Compact &  
Rugged  
(Ip66)

Data Rate  
2.5Gbps



**BETACH**  
SOLUTIONS

## Product Overview

ENOKIT FS8 is an all-outdoor wireless with an embedded high-resolution camera, inbuilt power solution, and advanced IP Radio capable of delivering 2976Mbps over a wireless network. Already recognized as one of the high-performance gigabit radios on the market with dual frequency, the ENOKIT FS8 provides a critical tool for Wi-Fi 6 deployment. ENOKIT FS8 takes its power source from solar energy.



## Features

- New generation Wi-Fi 6 (802.11ax) technology 11AX dual frequency concurrent, the highest wireless rate can reach 2976Mbps.
- Supporting Humanoid detection and other intelligent functions customize.
- Support 2.4 GHz & 5GHz Max data rate 2.5Gbps (Either) Gigabit network port, gigabit SFP optical port, high-speed transmission, or a direct connection is convenient.
- Field of view 110° diagonal Video resolution Inbuilt dual-frequency omnidirectional antenna, independent RF circuit design, suitable for outdoor field wireless coverage.
- Support JPEG capture and message push after humanoid detection alarm.
- Professional outdoor shell design, waterproof, dustproof grade up to IP66, working temperature up to -30°C~65°C, adapt to all kinds of harsh environment.
- Supports extensible MESH networking, which eliminates wiring for child nodes and makes it convenient to cover blind spot signal expansion.
- 2D/3D Noise Reduction & Ip66 Rating.
- Pole/wall mount installation, easy maintenance with a coverage distance of about 150-200m.
- Record and view in 1080p HD video during the day and infrared HD night vision after dark.
- Audio Speaker output and 2-way audio recording (Optional).
- Built-in Lithium battery for long life span and stable power output at night.
- Adjustable bracket to facilitate charging and improve conversion efficiency.
- High-efficiency Solar panel charging rate ranging from 50-120W
- Automatic RF tuning optimizes overall performance and eliminates weak signal devices, avoiding dragging down the entire network and improving wireless network performance.
- Embedded RTOS, dual-core 32bit pure hard compression and watchdog.
- Layer2|3 with Network Management System.
- Remote Monitoring support for the camera including ONVIF.





# Specifications

## System Management

- User name/password management.
- System logs view, download, or send to a server.
- Manually sets or synchronizes time with the NTP server.
- Backup Configuration.
- Import a configuration.
- Restore factory Settings.
- Restart a device.
- Local online upgrade, local firmware upgrade, or cloud upgrade.
- Ping watchdog functions, The device automatically recovers.
- In emergency mode, the abnormal device goes to the emergency page to upgrade the firmware.

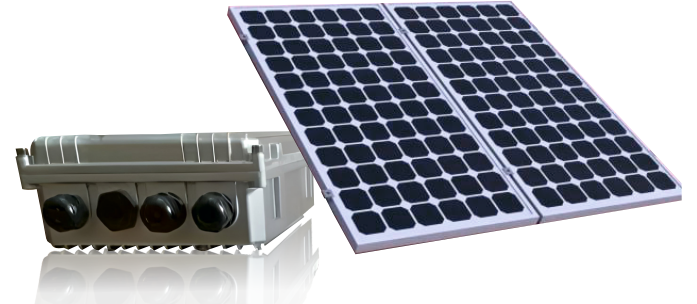
## wireless

- IEEE 802.11A/N/AC/AX, IEEE 802.11b/g/ N/AX wireless protocols.
- The highest wireless rate is 2976Mbps: 574Mbps in the 2.4ghz band, 2402Mbps in the 5GHz band.
- Beamforming 2 x 2, 4 x 4 MU - MIMO.
- SSID broadcasts or hides Number of SSID: 2.4g: 8; 5 g: 8.
- Channel bandwidth sets. 2.4G: 20M/40MHz/ automatic; 5G: 20M/40M/80M/160MHz automatic.
- Dynamic Channel Selection (DCS).
- IEEE 802.11k/ V/R protocol intelligent roaming.
- Automatic radio tuning.
- WMM: prioritization-based data processing and forwarding.
- OFDMA and TWT.



## Network Security

- FIT mode Portal authentication and MAC address authentication.
- WPAe, WPA2, WPA-PSK, WPA2-PSK, and WPA3 encrypt WPA, WPA2, WPA2, WPA3.
- Whitelist manages access devices.
- SSID is bound to a Tag VLAN.
- FIT mode broadcasts storm suppression.
- FIT mode DHCP defence.
- FIT mode ARP defence.



## Network features

- FIT mode CAPWAP interrupts service retention.
- LLDP Link discovery.
- Divide a VLAN according to the SSID a user accesses.
- Management VLAN.
- FAT mode DHCPv6, IPv6 address access, radiusv6 authentication and other functions.
- FIT mode CAPWAPv6, Wportalv6 authentication, DHCPv6 protection and other functions.

## Management style

- FIT mode manages a wireless controller (AC) in a unified manner.
- FAT mode for independent Web page management.
- NMS is centrally managed by a commercial cloud platform or central network management.

# Abbreviation

<b>2D/3D:</b>	Two Three Dimensional
<b>AC:</b>	Access Controller
<b>ARP:</b>	Address Resolution Protocol
<b>CAPWAP:</b>	Control And Provisioning of Wireless Access Points
<b>DHCP:</b>	Dynamic Host Configuration Protocol
<b>FIT &amp; FAT:</b>	Small & Large Network Management
<b>Gbps:</b>	Gigabit per second
<b>HD:</b>	High Definition
<b>IP66:</b>	Waterproof against directed water and rain or snow
<b>JPEG:</b>	Joint Photographic Experts Group
<b>LLDP:</b>	Link Layer Discovery Protocol
<b>Mbps:</b>	Megabits per second

<b>MESH:</b>	A group of connectivity devices
<b>MU-MIMO:</b>	Multi-User, Multiple Input, Multiple Output
<b>NTP:</b>	Network Time Protocol
<b>OFDMA:</b>	Orthogonal Frequency-Division Multiple Access
<b>ONVIF:</b>	Open Network Video Interface Forum
<b>RTOS:</b>	Real-time operating system
<b>SFP:</b>	Small Form-factor Pluggable
<b>SSID:</b>	Service Set Identifier
<b>TWT:</b>	Target Wake Time
<b>VLAN:</b>	Virtual Local Area Network
<b>WMM:</b>	Wireless Multimedia Extensions
<b>WPA:</b>	Wi-Fi Protected Access
<b>WPA-PSK:</b>	:Wi-Fi Protected Access Pre-Shared Key